

Installer Database Setup  
Oracle FLEXCUBE  
Release 12.3.0.0.0  
[December] [2016]



---

# Table of Contents

- 1. INSTALLING ORACLE FLEXCUBE DATABASE .....2
  - 1.1 INTRODUCTION .....2
  - 1.2 CREATING SCHEMA BY IMPORTING FULL DUMP .....2
  - 1.3 CREATING SCHEMA FROM SHIPMENT MEDIA .....2
    - 1.3.1 Backend Setup Using Silent Installer..... *Error! Bookmark not defined.*
- 2. BASIC SETUP .....ERROR! BOOKMARK NOT DEFINED.
  - 2.1 BASIC SETUP USING GUI INSTALLER .....**ERROR! BOOKMARK NOT DEFINED.**
  - 2.2 DATABASE INSTALLATION .....**ERROR! BOOKMARK NOT DEFINED.**

---

# 1. Installing Oracle FLEXCUBE Database

## 1.1 Introduction

Oracle FLEXCUBE database can be installed in one of the following methods.

- Import full dump – Import the Oracle FLEXCUBE objects into an empty schema using full dump. This is a manual activity.
- From shipment media – Load the shipment media objects into an empty schema using Installer.

These methods are discussed in detail under the following heads.

## 1.2 Creating Schema by Importing Full Dump

Under this method, you need to manually import the Oracle FLEXCUBE DMP file into the Oracle FLEXCUBE schema. This can be done using the following command:

```
$impdp user_name/password directory=dir_name dumpfile=dmp_file_name.dmp  
logfile=dmp_file_name.log remap_schema=from_schema_name:to_schema_name  
remap_tablespace=from_tablespace_name:to_tablespace_name transform=OID:n
```

## 1.3 Creating Schema from Shipment Media

Under this method, you need to create the schema from the shipment media.

### 1.3.1 Backend Setup using Silent Installer

Backend Setup has to be done using Silent Installer. DDL Compilation, Object Compilation and Static Data Load will be taken care as part of Backend Setup.

Run the <Product Processor>DBCompileRun.bat. DDL Compilation, Object Compilation and Static Data load will be done.

For Example: ROFC INSTALLATION-

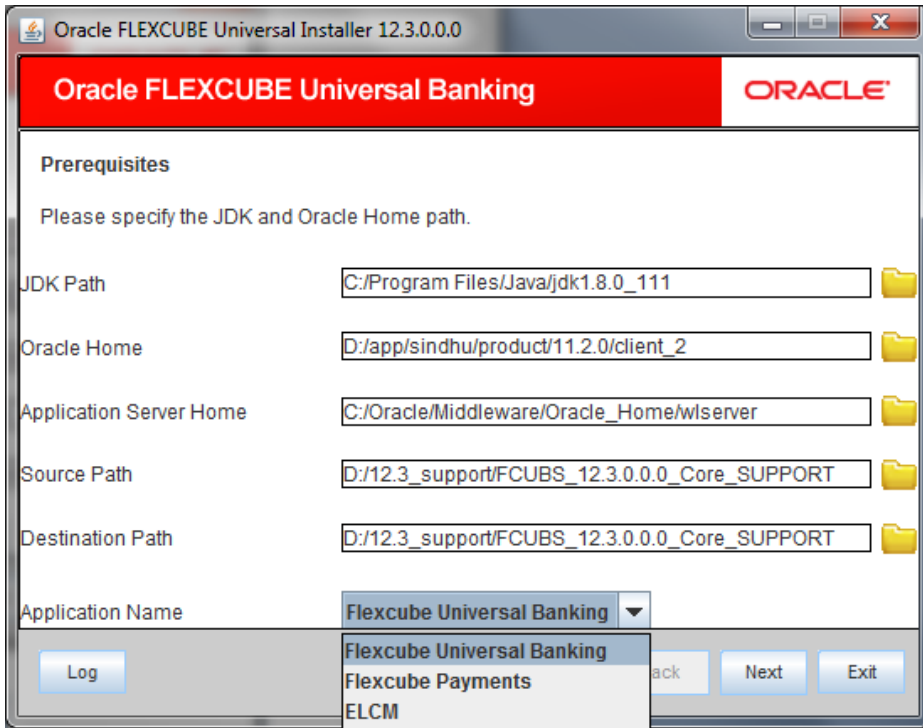
- a. Run ROFCDBCompileRun.bat in windows (ROFCDBCompileRun.sh in linux)
- b. Run POJOLoadRun.bat in windows (POJOLoadRun.sh in linux)

Check for the Invalid Count and make sure that the Invalid count is '0'.

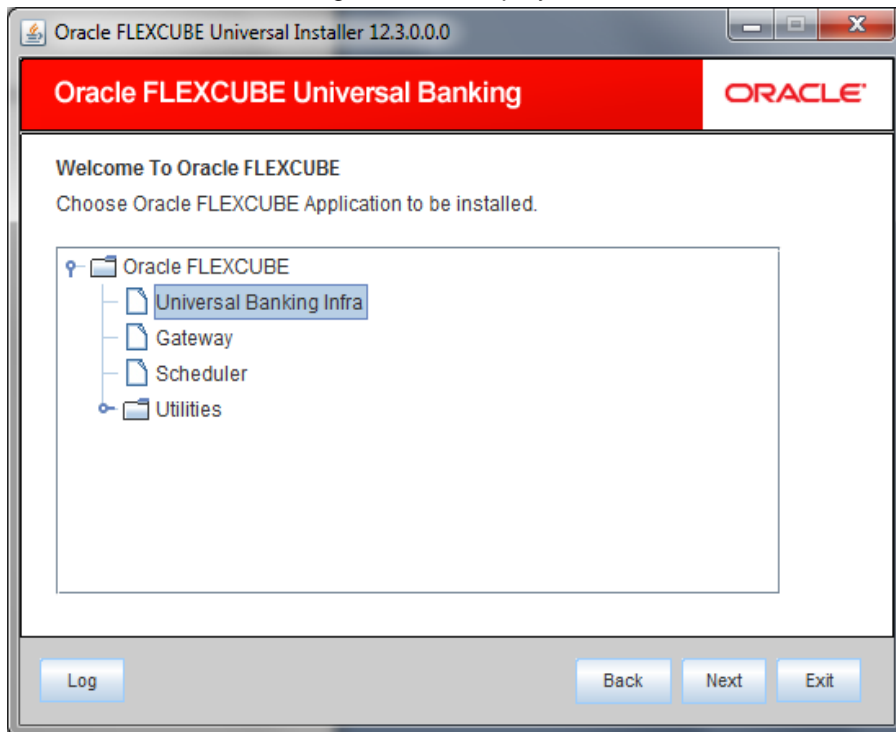
### 1.3.2 Basic Setup using GUI Installer

The steps to load objects from the shipment media are given below:

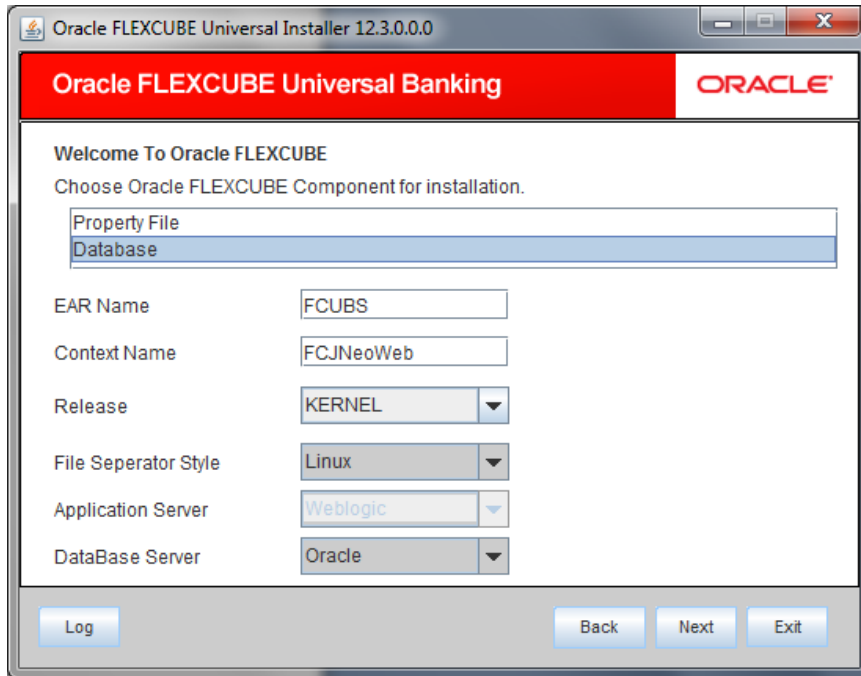
1. Launch Oracle FLEXCUBE Installer. Select the Application Name accordingly.



2. Click 'Next' and the following screen is displayed.



3. Click 'Next' and the following screen is displayed:



4. Choose 'Database Setup'.

Specify the following details:

**EAR Name**

Specify a name for the Application to be deployed

**Context Name**

Based on the Application type selected, the Installer displays the application context. However, you may modify the default value.

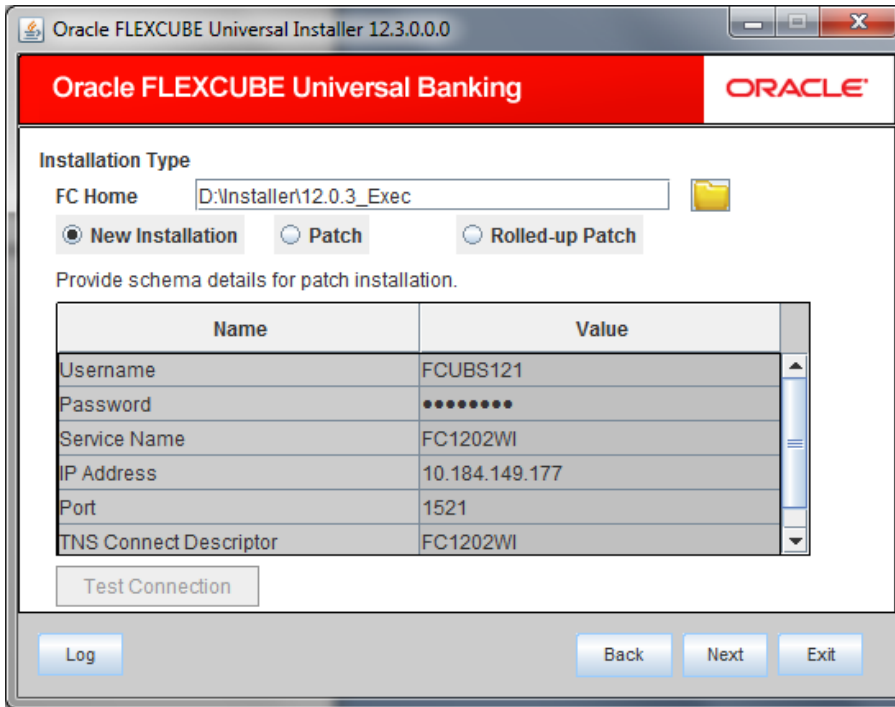
**Release**

Specify the release which you want to install.

**Database Server**

Specify the database server on which you are installing Oracle FLEXCUBE.

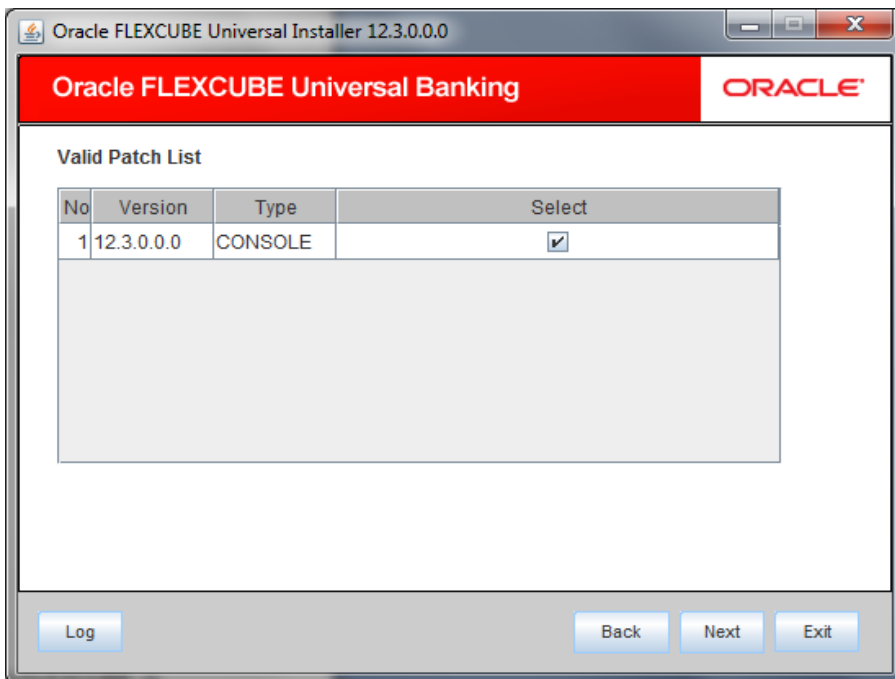
5. Once you have specified the above details, click 'Next' and the following screen is displayed:



Select the appropriate installation option. Provide schema details for validation in case of patch and rolled up patch installation. For New Schema details are not enabled. Click 'Next'.

- Based on the FCHOME chosen, the valid list of deployable units are listed as shown in the next screen:

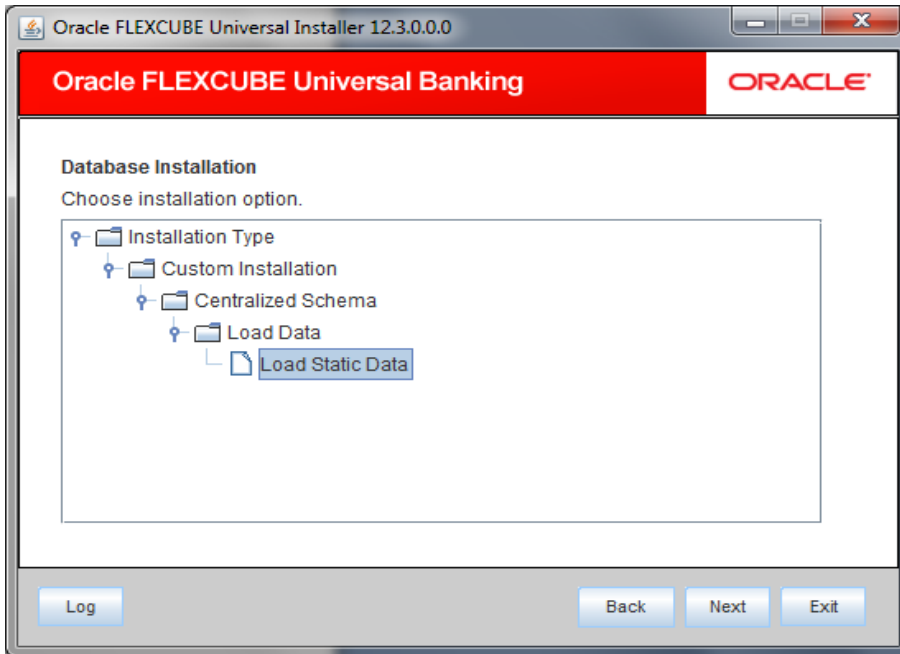
Choose the required set of Main and Patch releases. Click Next. Following screen is shown.



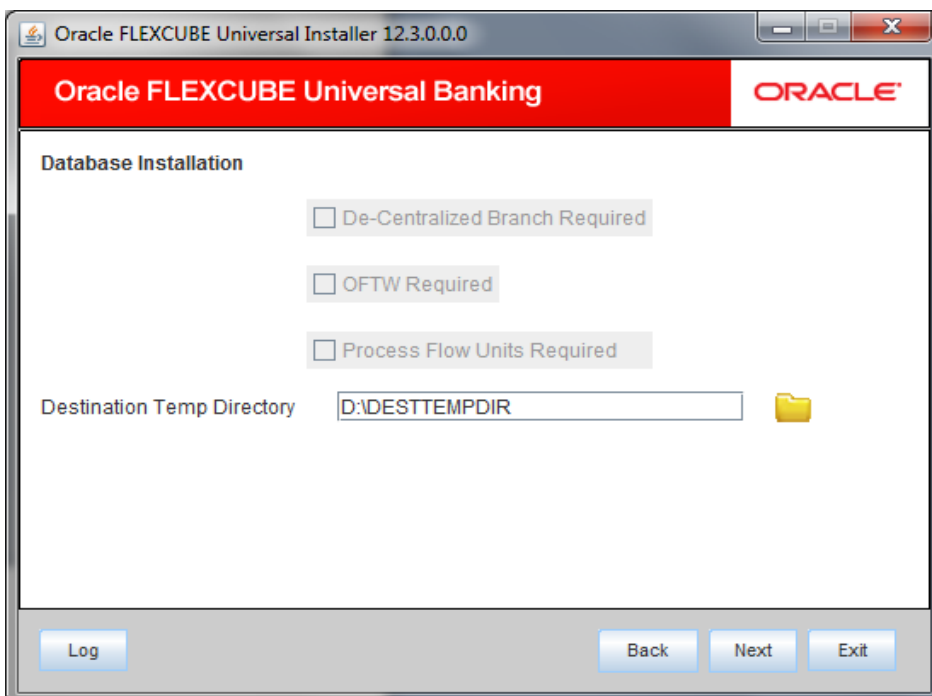
The Oracle FLEXCUBE installer supports custom installation of Oracle FLEXCUBE in two methods:

- Compile objects and load static data into the database
- Load objects and data by importing data and objects from the import file  
As mentioned above using the Silent Installer.

7. Select 'Load Static Data' under 'Custom Installation'




8. Click 'Next' and the following screen is displayed:



Specify the following details:

### Destination Temp Directory

Specify the destination directory. Use the directory icon  to browse the destination directory.

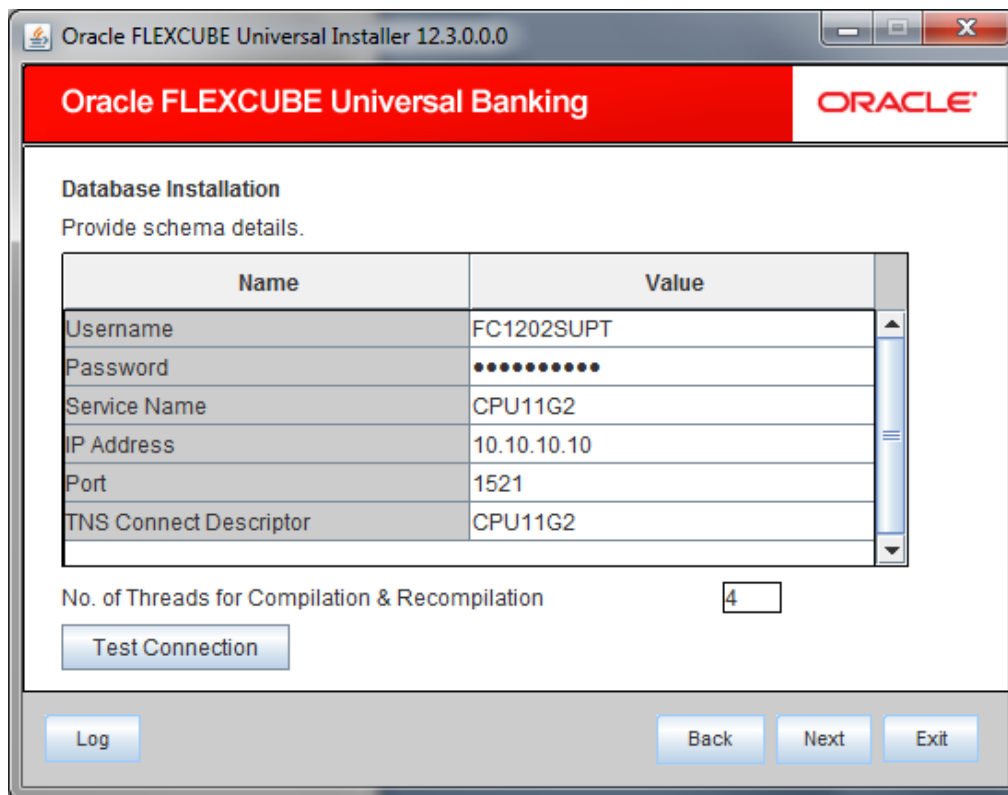
### OFTW Required

Mark checked, if OFTW (Oracle Flexcube Testing Workbench) is required

### De-Centralized Branch Required

Mark checked, if de-centralized branch is required. (This is done to create the Materialized View Logs on the Host schema)

9. Click 'Next' and the following screen is displayed:



Oracle FLEXCUBE Universal Banking

ORACLE

**Database Installation**  
Provide schema details.

Name	Value
Username	FC1202SUPT
Password	••••••••
Service Name	CPU11G2
IP Address	10.10.10.10
Port	1521
TNS Connect Descriptor	CPU11G2

No. of Threads for Compilation & Recompilation

Test Connection

Log Back Next Exit

Specify the following schema details:

### User Name

Specify the user name to access the schema.

### Password

Enter the schema password.

### Service Name

Provide service name of database.



### **IP Address**

Specify the IP address of the system where the database schema is installed.

### **Port**

Specify the port number.

### **No. of threads for Compilation & Recompilation**

Specify the number of processes that would be used to compile the objects and recompile the Objects in Recompile Process. Recommended value is 4 to 8. (no of cores of the machine from where db is being set) .Maximum Limit is No of cores\*2.

### **TNS Connect Descriptor**

Specify a valid connect string that contains the details for database connectivity.

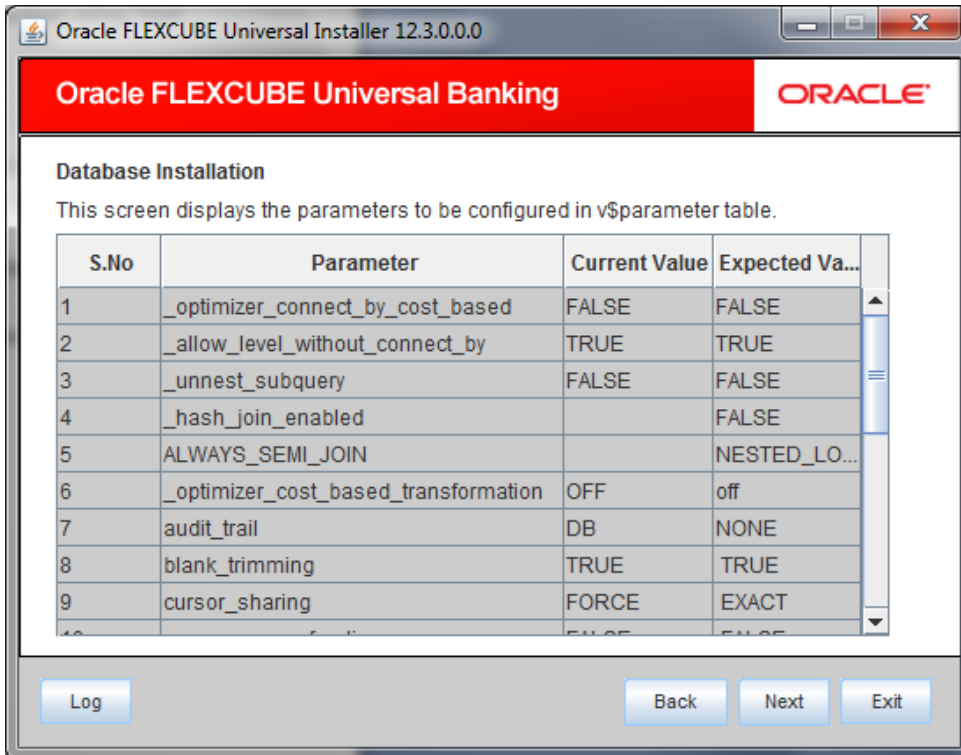
10. Once you have entered the details, you can test the database schema connection using 'Test Connection' button.



Note the following:

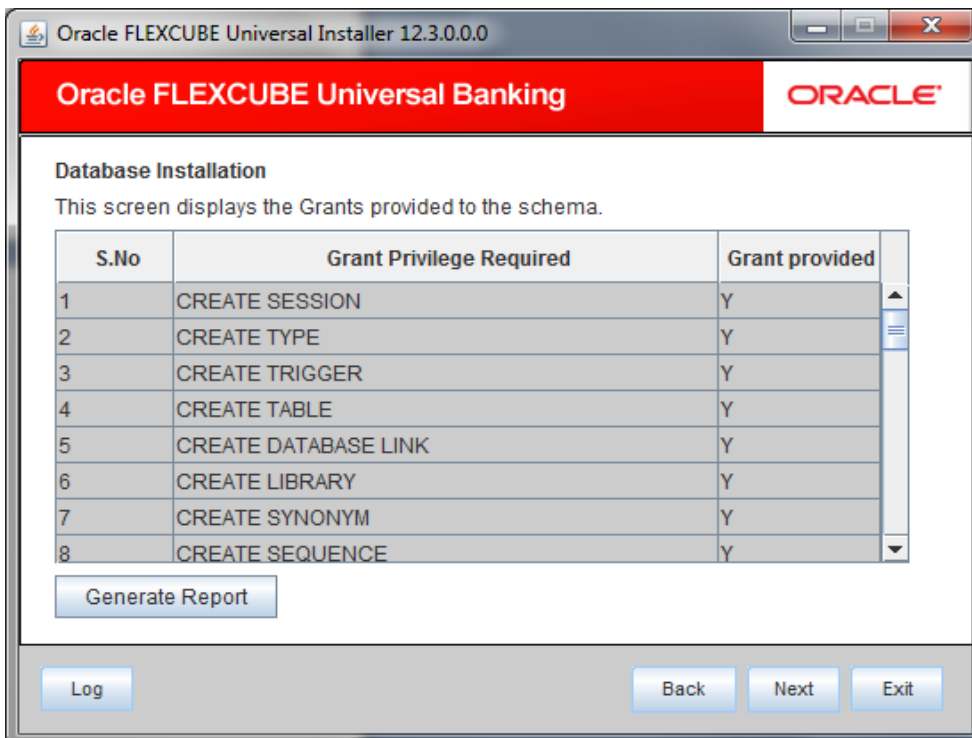
- If the connection is established, the installer displays a message 'Connection Successful'.
- If there is an error in establishing the connection, the system displays the message 'Invalid DB Credentials'.
- If the TNS entry is not proper, the installer displays the message 'TNS entries are not proper'.

11. After testing the connection successfully, click 'Next' and the following screen is displayed:



This screen displays the parameter details of the database.

- Click 'Next' and the following screen is displayed:



This screen displays the grants provided to the schema. If object compilation is required and the privilege is not given, then you can find that out from this screen.

13. Click 'Generate Report' button, the installer creates an SQL file 'grantScript.sql' containing the script for granting the privileges in the 'Logs' folder and the following screen is displayed

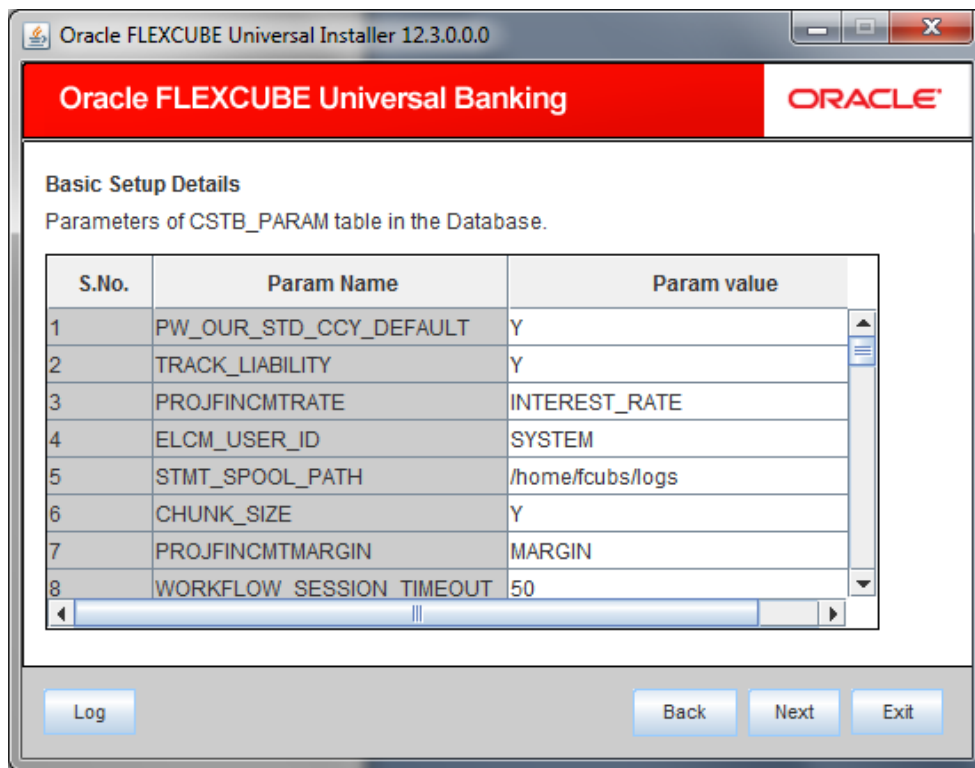
You can use this file to get the access.



Only the sys user can execute the file 'grantScript.sql' for granting privileges.

14. Click 'Next' button and the following screen is displayed.

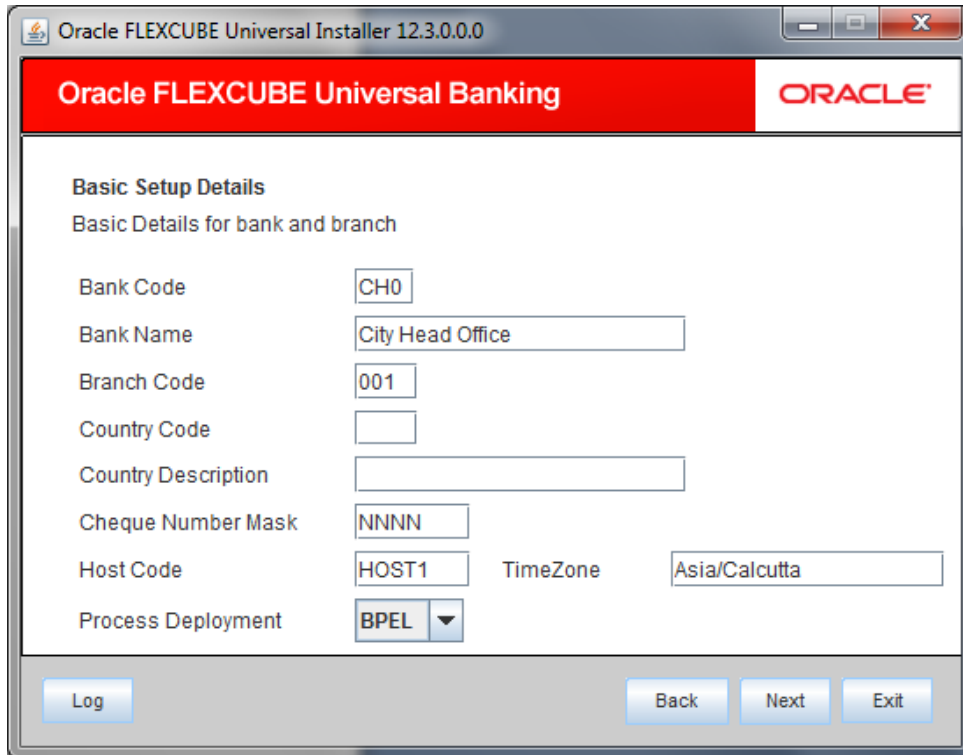
15. Click 'Next' and the following screen is displayed:



16. Screen displays basic setup details for table 'CSTB\_PARAM'.

Here debug path's can be added for WORK\_AREA and TRACE\_AREA.

17. Click 'Next'. The following screen is displayed.



Screen displays basic setup details for bank and branch

**Bank Code**

Displays the bank code.

**Bank Name**

Displays the bank name.

**Branch Code**

Displays the branch code.

**Country Code**

Displays the Country code.

**Country Description**

Displays the Country Description.

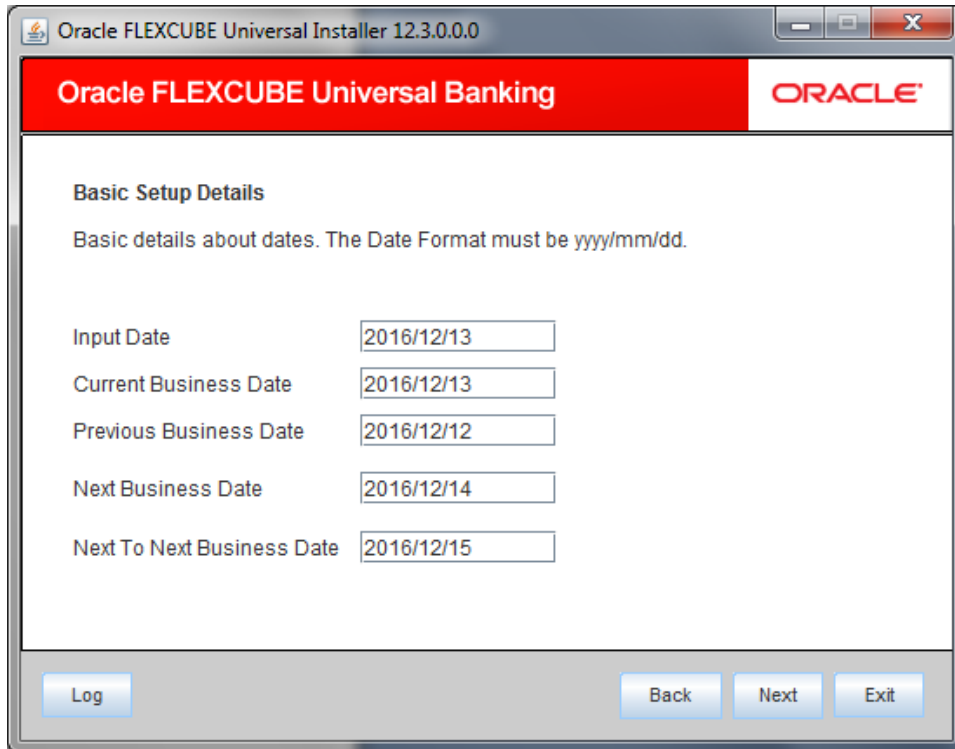
**Cheque Number Mask**

Displays the Cheque Number Mask

**Process Deployment**

Choose mode of process deployment between BPEL or BPMN

18. Click 'Next'. The following screen is displayed.



19. Screen displays basic setup details for dates.

**Input Date**

Displays the input date.

**Current Business Date**

Displays the current business date.

**Previous Business Date**

Displays the previous business date.

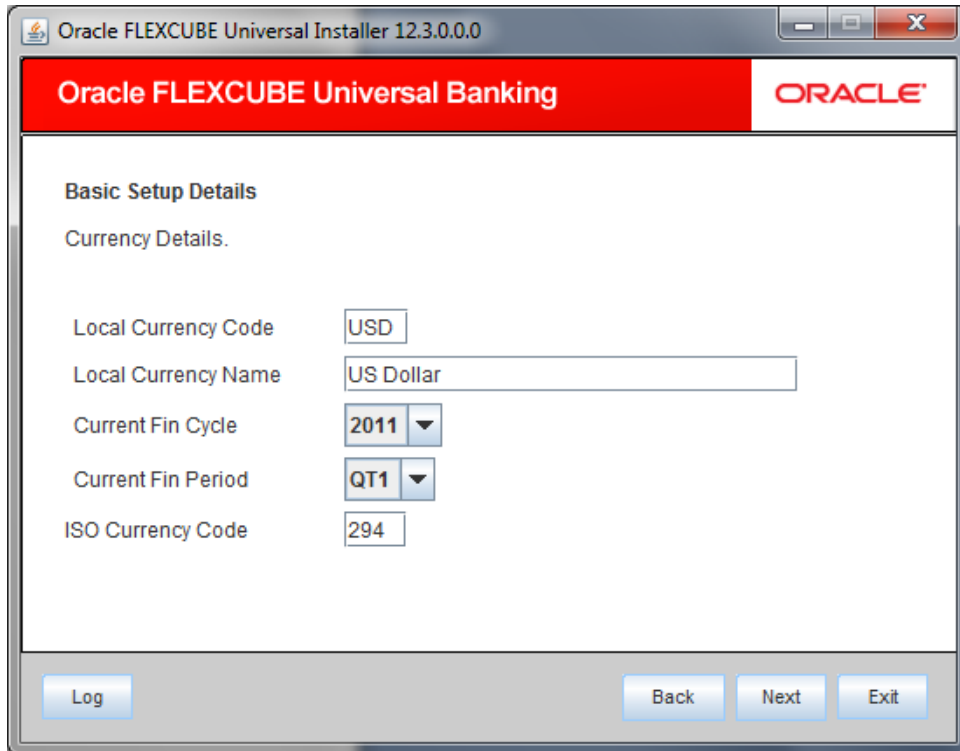
**Next Business Date**

Displays the next business date.

**Next to Next Business Date**

Displays the next to next business date.

20. Click 'Next'. The following screen is displayed.



Screen displays basic setup details for currency.

**Local Currency Code**

Displays Local Currency Code

**Local Currency Name**

Displays Local Currency Name

**Current Fin Cycle**

Displays Current Fin Cycle

**Current Fin Period**

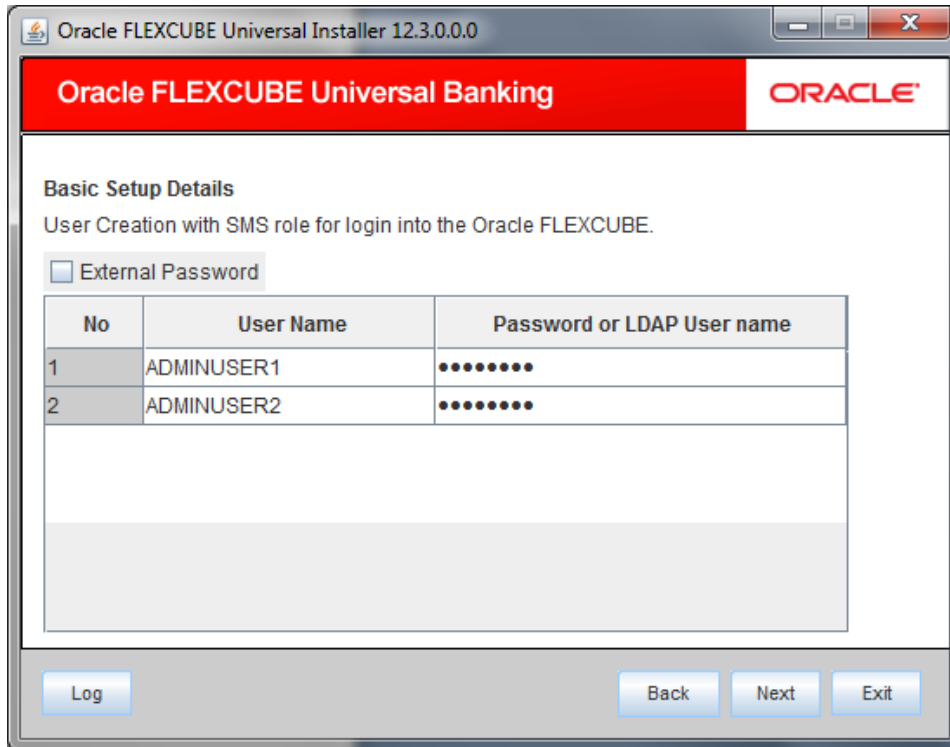
Displays Current Fin Period

**ISO Currency Code**

Displays ISO Currency Code.

21. Click 'Next' and the following screen is displayed:

22. Creation of 'SYSTEM' user is mandatory for payments processing , it needs to be created as part of static data setup.



Screen displays basic setup details for the table 'SMTB\_USER', 'SSTB\_USER' and 'SMTB\_USER\_ROLE'.

### **External Password**

Check this box to specify the external password.

### **User Name**

Displays the user name.

### **Password or LDAP User Name**

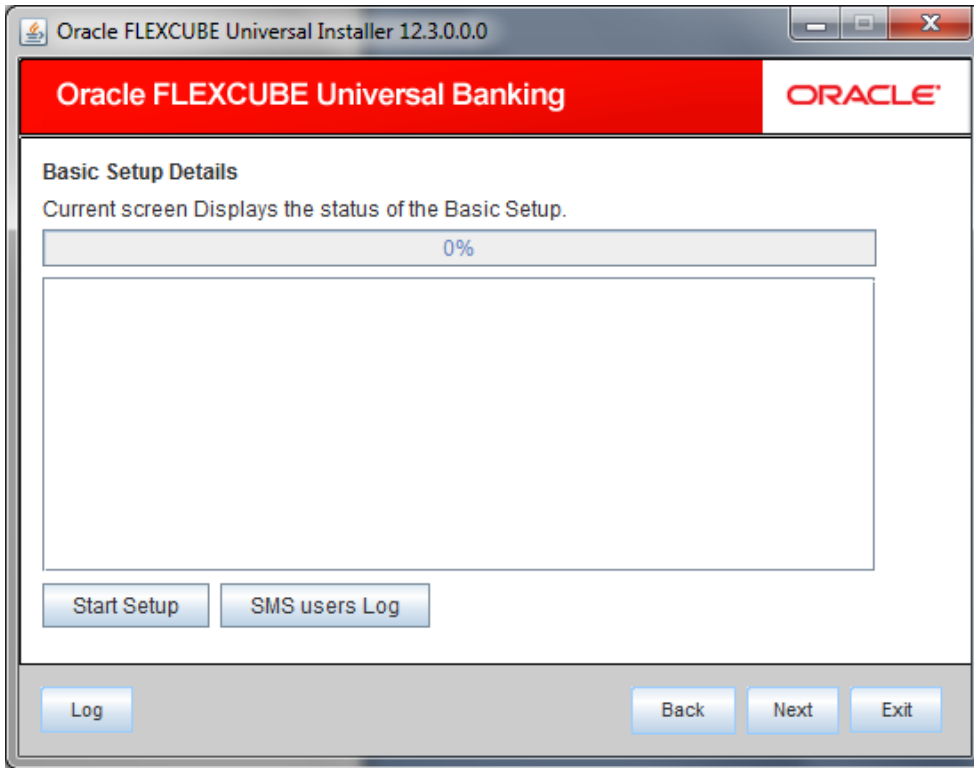
Specify the password. You can use the following characters in the password:

- Alphabets in uppercase
- Alphabets in lowercase
- Numerals



You cannot use '\_' (underscore) in the password.

23. Click 'Next' and the following screen is displayed:



24. Click 'Start Setup' button to compile the entries.

25. JNDI name in Smtb\_Modules\_group table need to be updated manually.

This completes the basic setup process.





Installer Database Setup  
[December] [2016]  
Version 12.3.0.0.0

Oracle Financial Services Software Limited  
Oracle Park  
Off Western Express Highway  
Goregaon (East)  
Mumbai, Maharashtra 400 063  
India

Worldwide Inquiries:  
Phone: +91 22 6718 3000  
Fax: +91 22 6718 3001  
[www.oracle.com/financialservices/](http://www.oracle.com/financialservices/)

Copyright © [2007], [2016], Oracle and/or its affiliates. All rights reserved.

Oracle and Java are registered trademarks of Oracle and/or its affiliates. Other names may be trademarks of their respective owners.

**U.S. GOVERNMENT END USERS:** Oracle programs, including any operating system, integrated software, any programs installed on the hardware, and/or documentation, delivered to U.S. Government end users are "commercial computer software" pursuant to the applicable Federal Acquisition Regulation and agency-specific supplemental regulations. As such, use, duplication, disclosure, modification, and adaptation of the programs, including any operating system, integrated software, any programs installed on the hardware, and/or documentation, shall be subject to license terms and license restrictions applicable to the programs. No other rights are granted to the U.S. Government.

This software or hardware is developed for general use in a variety of information management applications. It is not developed or intended for use in any inherently dangerous applications, including applications that may create a risk of personal injury. If you use this software or hardware in dangerous applications, then you shall be responsible to take all appropriate failsafe, backup, redundancy, and other measures to ensure its safe use. Oracle Corporation and its affiliates disclaim any liability for any damages caused by use of this software or hardware in dangerous applications.

This software and related documentation are provided under a license agreement containing restrictions on use and disclosure and are protected by intellectual property laws. Except as expressly permitted in your license agreement or allowed by law, you may not use, copy, reproduce, translate, broadcast, modify, license, transmit, distribute, exhibit, perform, publish or display any part, in any form, or by any means. Reverse engineering, disassembly, or decompilation of this software, unless required by law for interoperability, is prohibited.

The information contained herein is subject to change without notice and is not warranted to be error-free. If you find any errors, please report them to us in writing.

This software or hardware and documentation may provide access to or information on content, products and services from third parties. Oracle Corporation and its affiliates are not responsible for and expressly disclaim all warranties of any kind with respect to third-party content, products, and services. Oracle Corporation and its affiliates will not be responsible for any loss, costs, or damages incurred due to your access to or use of third-party content, products, or services.